

SKS-100 | Photosensor

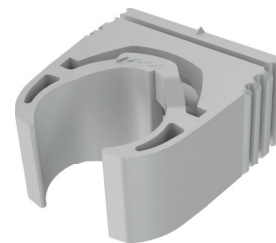


- **SKS-100:** external photosensor for twilight switch SOU-1 and Light intensity controller LIC-1 and LIC-2.
- Sensor is installable to panel (by screw-able transparent cover) to opening with diameter 20 mm (0.79")
- A part of the sensor is a plastic holder for placing into the wall or to another place.
- Protection degree is IP65.

EAN code
SKS-100: 8594030337288

Technical parameters	SKS-100
V_{max} :	100 V DC
P_{max} :	90 mW
λ_{smax} :	540 nm
R_{totx} :	2 - 6 k Ω
R_{min} :	150 k Ω
Operating temperature:	-30 to +70 °C (-22 to 158 °F)
Storage temperature:	-30 to +70 °C (-22 to 158 °F)
Protection degree:	IP 65
Terminal block:	Push-in terminals
Cable size cross section:	Solid: 0.2 to 0.75 mm ² (24 - 18 AWG) stranded + cable end: 0.25 to 0.34 mm ² (30-28 AWG)
Ø of connecting cable:	max. 6.5 mm (0.26")
Sensor cable length:	max. 50 m (164')
Dimensions:	58 x 24 mm (2,28 x 0.94")
Weight:	20 g

Holder



- V_{max} : maximum operating voltage (maximal value at darkening)
 P_{max} : maximum power dissipation (at 25 °C/77 °F)
 λ_{smax} : wavelength for maximum sensitivity
 R_{totx} : resistance at light intensity 10 lx and a colour temperature 2856 °K
 R_{min} : dark resistance (the minimum resistance value after breaking illumination)

Description

